

Topaz



**Topaz<sup>®</sup>**

# Topaz Expertise

### Areas of application

The handle fittings of the Topaz line are especially well-suited for doors with a low usage frequency, such as room doors in residential buildings.

### Version

The handle fittings are available in satin brushed stainless steel and with a brass adapter. The handle roses and key roses are provided with a clip-fit cover to conceal the screws. All plastic base plates are equipped with cams for secure fastening on the door.

### Packaging units

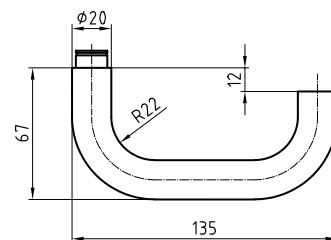
|                    |          |
|--------------------|----------|
| Lever handles      | 10 pairs |
| Lever handle roses | 20 pairs |
| Key roses          | 20 pairs |
| WC roses           | 10 pairs |
| Long plates        | 10 pairs |

| Glutz Lever Handle Assortment              | Topaz                |
|--|----------------------|
| <b>Characteristics</b>                     | <b>Equipment</b>     |
| Handle material stainless steel            | Brass spindle sleeve |
| Square spindle 8 x 84 mm                   | ✓                    |
| Usage category 3 according to EN1906: 2010 | ✓                    |
|  | ✓                    |

## Lever handle

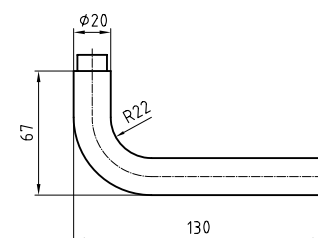
### 30.010

Lever handle pair Ø 20 mm  
with 8 x 84 mm square spindle  
Satin stainless steel



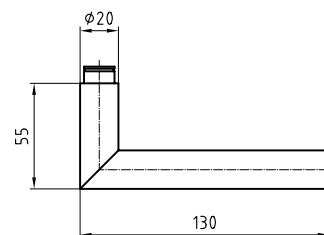
### 30.020

Lever handle pair Ø 20 mm  
with 8 x 84 mm square spindle  
Satin stainless steel



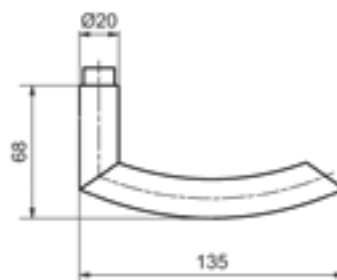
### 30.030

Lever handle pair Ø 20 mm  
with 8 x 84 mm square spindle  
Satin stainless steel



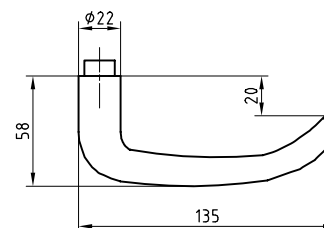
### 30.040

Lever handle pair Ø 20 mm  
with 8 x 84 mm square spindle  
Satin stainless steel



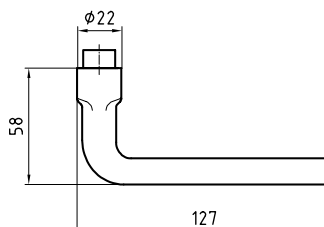
### 30.050

Lever handle pair Ø 22 mm  
with 8 x 84 mm square spindle  
Satin stainless steel



### 30.160

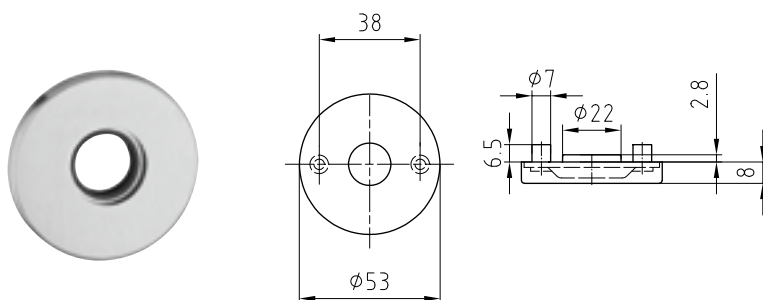
Lever handle pair Ø 22 mm  
with 8 x 84 mm square spindle  
Satin stainless steel



# Roses

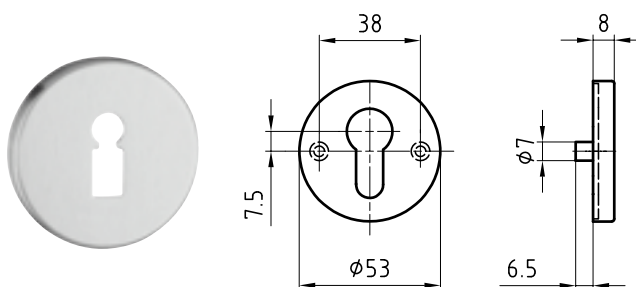
## 5632C

Lever handle rose pair, clipped on  
Diameter 53 mm  
with plastic base plates  
Satin stainless steel clip-fit cover  
21 mm or 23 mm cover hole



## 5332C

Key rose pair, clipped on  
Diameter 53 mm  
with plastic base plates  
Satin stainless steel clip-fit cover



## Holes:

- .0 Blank
- .1 Key (BB)
- .2 Round cylinder (RZ)
- .3 Profile cylinder (PZ)
- .4 WC with red/green indicator
- .41 WC without red/green indicator



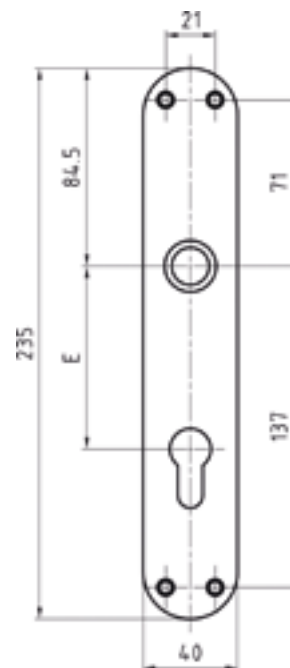
## Long plates

### 31345

Rounded long plate  
Length 235 mm  
Width 40 mm  
Height 2 mm  
Satin stainless steel  
Steel guide

#### Holes:

- .0 Blank
- .1 Key (BB)
- .2 Round cylinder (RZ)
- .3 Profile cylinder (PZ)
- .4 WC with indicator
- .41 WC without red/green indicator

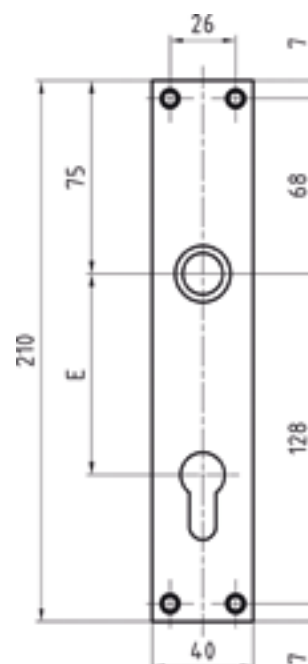


### 31341

Rectangular long plate  
Length 210 mm  
Width 40 mm  
Height 2 mm  
Satin stainless steel  
Steel guide

#### Holes:

- .0 Blank
- .1 Key (BB)
- .2 Round cylinder (RZ)
- .3 Profile cylinder (PZ)
- .4 WC with indicator
- .41 WC without red/green indicator



**Glutz AG**

Segetzstrasse 13, 4502 Solothurn, Switzerland  
Tel. +41 32 625 65 20, Fax +41 32 625 65 35  
info@glutz.com, www.glutz.com

**Glutz Deutschland GmbH**

Schmalenhofer Strasse 61, 42551 Velbert, Deutschland  
Tel. +49 2051 8013 51-0, Fax +49 2051 8013 51-15  
info-de@glutz.com, www.glutz.com

**Glutz GmbH Österreich**

St. Oswalder Strasse 5c, 4293 Gutau, Österreich  
Tel. +43 7946 20506, Fax +43 7946 20506-10  
info-at@glutz.com, www.glutz.com

**Glutz UK Ltd.**

11 Finch Drive, Springwood Industrial Estate  
Braintree CM7 2SF, United Kingdom  
Tel. +44 1376 348 808, Fax +44 1376 348 848  
info-uk@glutz.com, www.glutz.com

**Glutz Singapore Pte Ltd.**

61 Ubi Avenue, #04-13, UB Point  
Singapore 408 941  
Tel. +65 6 55 44 111, Fax +65 6 55 44 610  
info-sg@glutz.com, www.glutz.com