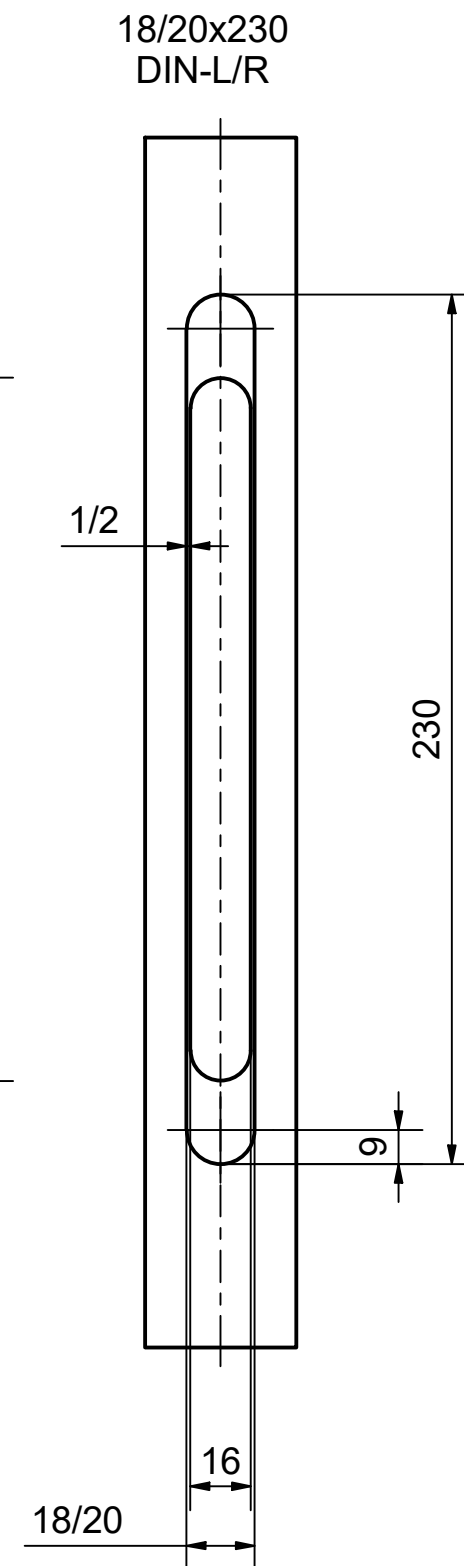
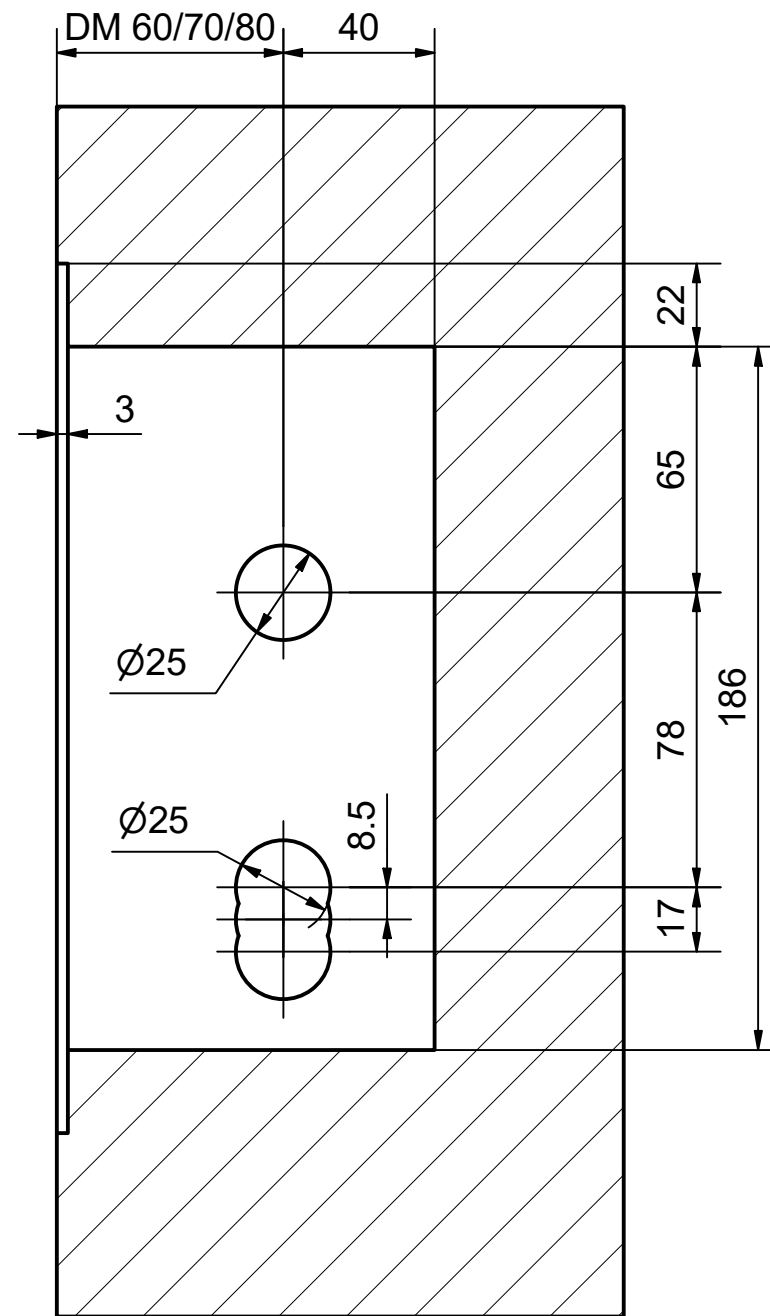
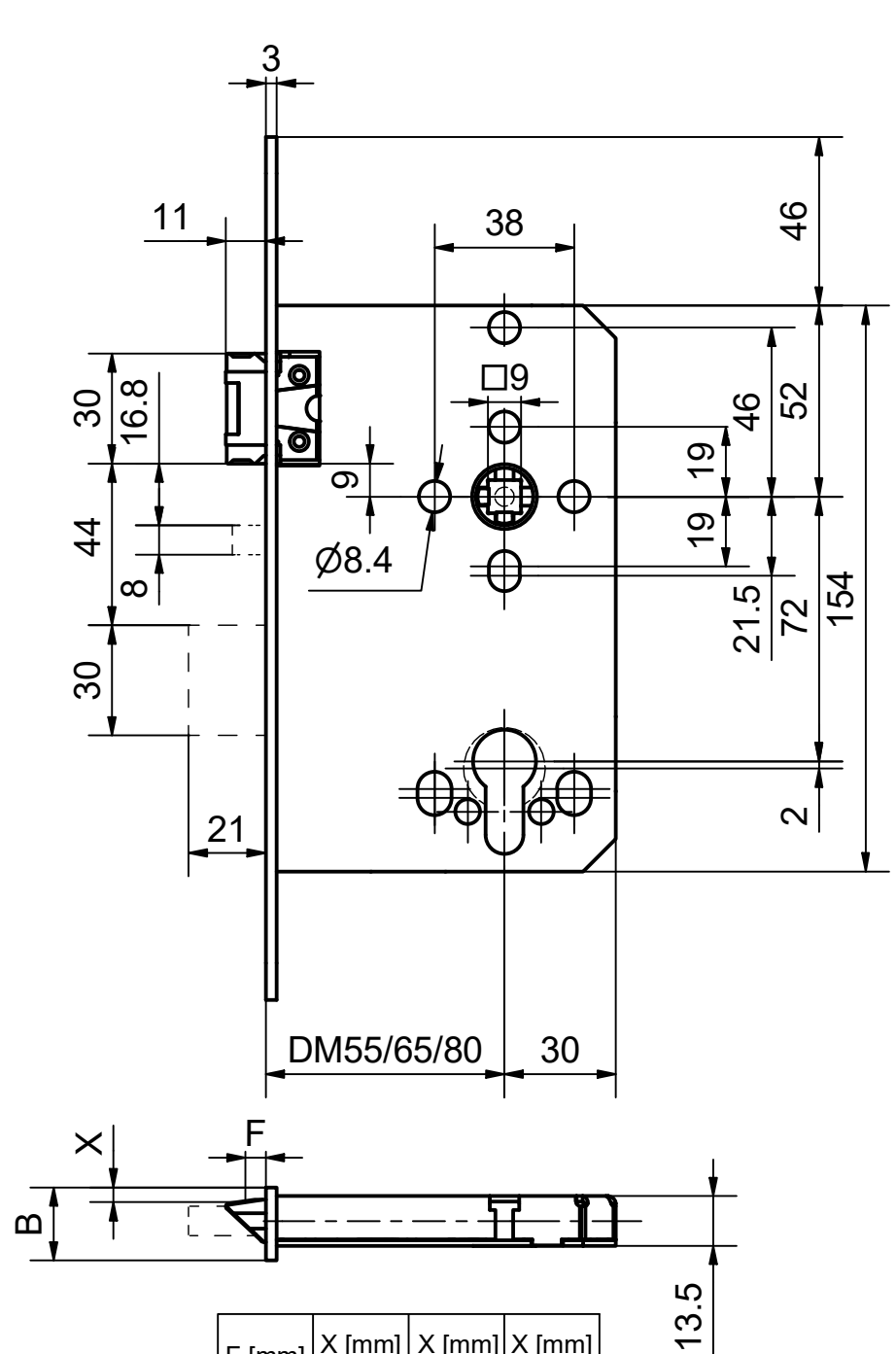


F [mm]	X [mm] B=18	X [mm] B=20
5	3.8	4.8
4	3.7	4.7
3	3.5	4.5
2	3.4	4.4



DIN - PZ72/RZ74



F [mm]	X [mm] B=20	X [mm] B=24	X [mm] B=20*
5	4.8	6.8	4
4	4.7	6.7	3.9
3	4.5	6.5	3.7
2	4.4	6.4	3.6

\*nicht mittiger Stulp

